

Special Issue: Pest Control

Effects of a Bank Plant on the Control of Rice Planthoppers: A Field Study

Xin Guo^{1#}; Qiao-Yu Zhou^{2#}; Meng-Meng Ru¹; Bei Cao¹;
Xin Huang²; Xu-Song Zheng³; Ping-Yang Zhu^{1*}

¹College of Life Sciences, Zhejiang Normal University, China

²Agricultural Technology Extension Center of Panan, China

³State Key Laboratory for Managing Biotic and Chemical Threats to the Quality and Safety of Agro-products, Institute of Plant Protection and Microbiology, Zhejiang Academy of Agriculture Sciences, China

*Corresponding author: Ping-Yang Zhu

College of Life Sciences, Zhejiang Normal University, Jinhua 321004, China.

Email: zpy85@163.com

#These authors have been equally contributed to this article.

Received: July 18, 2024

Accepted: August 26, 2024

Published: September 02, 2024

Introduction

Modern agricultural intensification has significantly diminished non-rice field habitats, causing a notable decline in farmland biodiversity and facilitating the proliferation of crop pest populations [1]. To promote sustainable agricultural practices, refined habitat regulation techniques have emerged as crucial elements in the ecological management of crop pests [2,3], particularly in the context of rice pest control [4-6]. The objective of ecological pest control is to strategically leverage plant diversity to bolster the efficiency of natural pest enemies, thereby mitigating economic losses [1,4]. This entails safeguarding and amplifying the role of natural enemies by providing essential resources like shelter, host plants, alternative prey, and non-prey foods [1,6]. The conservation and utilization of natural enemies in rice fields have proven effective in rice planthopper control [4]. Weeds in non-rice field habitats serve as shelters for *Anagrus nilaparvatae*, a significant egg parasitoid of rice planthoppers, with delphacidae insects on weeds serving as crucial alternative hosts for *A. nilaparvatae* [7]. However, the protective effects on natural enemies vary across different host

Abstract

Utilizing ecological engineering to manage pests by enhancing the biological control function of natural predators through the selection of high-efficiency bank plants and the establishment of bank plant systems within agricultural ecosystems is an optimal strategy. While bank plant systems have found widespread use in greenhouse crop cultivation, their application in rice fields remains limited. This study aimed to assess the efficacy of *Leersia sayanuka* as a bank plant for controlling planthoppers and to explore the potential of sesame as a complementary plant to enhance the effectiveness of the bank plant system through field trials. The findings revealed that planting a strip of *L. sayanuka*, at least 50 cm wide and extending over 1 m in length, had a notable impact on planthopper control in paddy fields. Moreover, the incorporation of *Sesamum indicum*, a nectar plant, into the bank plant system consisting of *L. sayanuka*, *Nilaparvata muii*, and *Anagrus nilaparvatae*, led to a significant increase in the population of *Anagrus* spp. in rice fields. This increase was accompanied by a rise in the egg parasitism rate targeting rice planthoppers, resulting in a marked improvement in overall rice planthopper control in paddy fields. Thus, the combined system demonstrated efficiency as an effective bank plant system for managing rice planthoppers.

Keywords: *Leersia sayanuka*; Bank plant; Sesame; Rice; Ecological engineering for pest control

plants and alternative hosts [8,9], necessitating exploration to identify the most effective plant and alternative host systems to enhance conservation biology efficiency.

The bank plant system, a recent innovation in biological control technology, comprises bank plants, alternative food, and beneficial organisms, or combinations thereof [10]. Bank plants provide food resources to alternative hosts or prey, aiming to establish self-sustaining propagation systems for beneficial organisms within crop systems [10]. Various bank plants like cucumber, papaya, ornamental peppers, and oats have demonstrated success in pest control [11], though research on bank plant systems for rice pests remains limited. The integration of nectar plants into agricultural systems to attract natural predators and enhance their egg production and pest control capacity warrants further investigation [12]. Studies indicated that incorporating *Sesamum indicum* into paddy field systems effectively boosts the population and pest control capabilities of key natural enemies of rice pests [4].

Rice serves as the staple food for over 50% of the global population, with China alone relying on it for 60% of its dietary needs [13]. The rice pest *Nilaparvata lugens* Stål, has witnessed alarming outbreaks in recent years, posing a significant threat to global food security [14,15]. Current rice pest management heavily leans on broad-spectrum insecticides, despite their acknowledged side effects on natural enemies, the environment, and food safety [16]. However, research on ecological pest control methods for sustainable rice pest management remains limited, despite the severity of the damage caused [4]. *Nilaparvata muiri*, a homologous species of *N. lugens*, is prevalent in China's southern rice-growing regions [17]. *Leersia sayanuka*, a primary host of *N. muiri*, exhibits a high population growth rate on this grass, making it a promising candidate as a bank plant for rice planthopper control [18]. Previous studies have identified the potential of the *L. sayanuka*, *N. muiri*, *A. nilaparvatae* system as a bank plant system for rice planthopper control, validating its efficacy in field applications [18]. Further research by Zheng et al. [19] explored the feasibility of establishing a "*L. sayanuka*, *N. muiri*, *Tyctothus chinensis*" bank plant system in the field.

This study evaluates the potential of *L. sayanuka* as a bank plant system for rice planthopper control and assesses the feasibility of *S. indicum* as a functional plant to enhance the effectiveness of the bank plant system. The findings aim to provide a foundation for subsequent research and field implementation in this area.

Materials and Methods

Experimental Materials

Rice: Seeds of the insect-susceptible rice cultivar TN1 were obtained from the International Rice Research Institute (IRRI) and germinated in concrete tanks. After 15 days, the seedlings were transplanted into plastic pots, and those aged between 40 and 50 days were selected for testing. TN1 rice seedlings were sown at 15-day intervals.

Leersia sayanuka was collected from fields in the suburbs of Hangzhou, with tillers cut and directly transplanted into plastic pots. One stem was placed per pot for propagation, with transplantations performed every 15 days. Plants aged between 40 and 50 days were used for testing.

Both TN1 rice and *L. sayanuka* were cultivated in small plastic pots (10 cm in diameter and 12 cm in height) within insect-free mesh chambers to ensure the absence of insects before testing. Before introducing insects, any old or yellow leaves, along with their sheaths, were removed. For rice, three tillers were maintained per pot, while for *L. sayanuka*, five tillers were kept per pot to ensure uniform biomass distribution in each pot.

***N. lugens*:** The test *N. lugens* were collected from the rice fields of the Jinhua experimental base and subsequently reared in laboratory cages (90 cm×80 cm×80 cm). These cages contained 40 to 50-day-old TN1 rice seedlings. The insect-rearing greenhouse maintained an average temperature of 27 ± 0.5 , with relative humidity ranging between 70-90%, and a light cycle of 12 hours of light followed by 12 hours of darkness. *N. lugens* were reared on TN1 rice for four generations prior to testing.

Experimental Methods

Site description: The experimental site was chosen in the Rice Pest Ecological Engineering Pest Control Demonstration Area in Siping Village, Tangxi Town, Jinhua City, Zhejiang Prov-

ince, China. The demonstration area was 10 hm², and each field in the core area was regular in size and dimension (20 m × 50 m), containing three longitudinal and two transverse mechanized roads.

Experimental design: Four treatments were established: 1) A 50 cm wide and 5 m long strip of *L. sayanuka* was planted in the rice field next to the ridge. *S. indicum* seeds were planted on the ridge; 2) A 50 cm wide and 5 m long strip of *L. sayanuka* was planted in the rice field next to the ridge; 3) A 50cm wide and 1 m long *L. sayanuka* strip was planted in the rice field next to the ridge; 4) Conventional ridges lacking *L. sayanuka* and *S. indicum* were utilized as a control. The experiment was a split-plot design with three replicates. The ridge length in each plot was 10 m, and the isolation distance was 10 m. The rice cultivar was an indica-japonica hybrid single-season rice Yongyou 1540. In early June, the ridge was planted with *S. indicum* seeds. The *L. sayanuka* was transplanted at the same time with rice on June 15, and *L. sayanuka* was transplanted as single stem tiller cuttings into the rice field near the ridge, with the spacing between plants and rows being 5 cm. On June 30, strips of *L. sayanuka* were planted with *N. muiri* at a density of 100 adult females per m².

Survey of rice planthoppers and their parasitic natural enemies during the growing season of rice: The egg trapping method was utilized to assess the parasitization of rice planthopper eggs by wasps. For each pot, three strong rice seedlings were placed with five egg-bearing *N. lugens*. After 24 hours of oviposition, the *N. lugens* were removed. Pots containing *N. lugens* eggs were positioned at distances of 1 m, 5 m, and 10 m from the ridge. After 48 hours, these pots were retrieved and brought to the laboratory. After five days of incubation in an insect-free artificial climate chamber (26.0 ± 1 , 70% to 90% RH, 12-hour light cycle), they were dissected to determine the total number of *N. lugens* eggs and the number parasitized, enabling the calculation of the parasitism rate. This investigation was conducted once during the booting stage of rice. To assess the population of *Anagrus* spp., yellow sticky traps measuring 28.5 cm × 21 cm were deployed at distances of 1 m, 5 m, and 10 m from the ridge. These traps were wrapped in plastic wrap and retrieved after 48 hours. In the laboratory, they were examined using a stereoscope to record the population count of *Anagrus* spp. The population count of rice planthoppers (*Laodelphax striatellus*, *Sogatella furcifera*, *N. lugens*) and spiders in rice

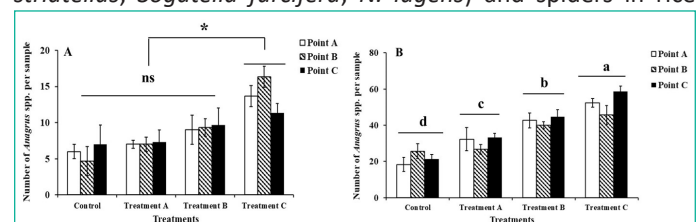


Figure 1: Influence of different treatments of *Leersia sayanuka* bank plant system on the population counts of *Anagrus* spp. in rice fields at distances of 1 m (Point A), 5 m (Point B), and 10 m (Point C) from the ridge (using yellow sticky trap method). A) Tilling stage; B) Booting stage. Treatment A: a 50cm wide and 1 m long *L. sayanuka* strip was planted in the rice field next to the ridge; Treatment B: a 50 cm wide and 5 m long strip of *L. sayanuka* was planted in the rice field next to the ridge; Treatment C: a 50 cm wide and 5 m long strip of *L. sayanuka* was planted in the rice field next to the ridge and *Sesamum indicum* seeds were planted on the ridge; Control: Conventional ridges lacking *L. sayanuka* and *S. indicum* were utilized. The values showed are means (\pm SE) for each treatment. ns indicates non-significant differences between treatments. * and different lowercase letters indicate significant differences between treatments ($P < 0.05$).

fields under different treatments was conducted using the patting method (with a 30 × 40 cm enamel tray) during the tillering and booting stages of rice. Each treatment was sampled using the five-point sampling method, with each point consisting of 5 trays of 2 rice bushes.

Statistical analysis: Data were analyzed using SPSS 26.0 software to contrast the significant differences between treatments using analysis of variance (ANOVA) followed by a Tukey's test for the number of rice planthoppers and rice planthoppers egg parasitoid populations. Parasitism rate data were subjected to inverse sinusoidal square root transformation prior to analysis.

Results and Discussion

Effects of Different Treatments of *L. Sayanuka* Bank Plant System on The Population of *Anagrus* Spp. in Rice Fields

There was no significant difference in the *Anagrus* spp. Populations in the rice field within 10 m of the ridge ($df = 2, F = 1.237, P = 0.299$) (Figure 1A & 1B). However, there was a significant difference between the different treatments of rice fields and the population number of *Anagrus* spp. in rice fields. The population count of *Anagrus* spp. in rice fields of the 5 m *L. sayanuka* combined with *S. indicum* treatment was significantly higher than the other three treatments at the tillering stage of rice ($df = 3, F = 14.158, P < 0.001$) (Figure 1A). Similarly, the population count of *Anagrus* spp. was significantly higher in the rice field with 5 m spacing of *L. sayanuka* combined with *S. indicum* treatment than in the rice field with 5 m spaced *Leersia sayanuka* treatment compared to 1 m spaced *L. sayanuka*. The population count of *Anagrus* spp. was significantly lower in the control rice field than in the other three treatments at the booting stage of rice ($df = 3, F = 34.746, P < 0.001$) (Figure 1B).

Effect of Different Treatments of The *L. Sayanuka* Bank Plant System on Parasitism Rate of *Anagrus* Spp. In Rice Fields

The findings of the egg trapping test of rice planthoppers demonstrated no significant difference in the parasitism rate of the *Anagrus* spp. in the rice field within 10 m from the ridge ($df = 2, F = 0.061, P = 0.941$). There were significant differences

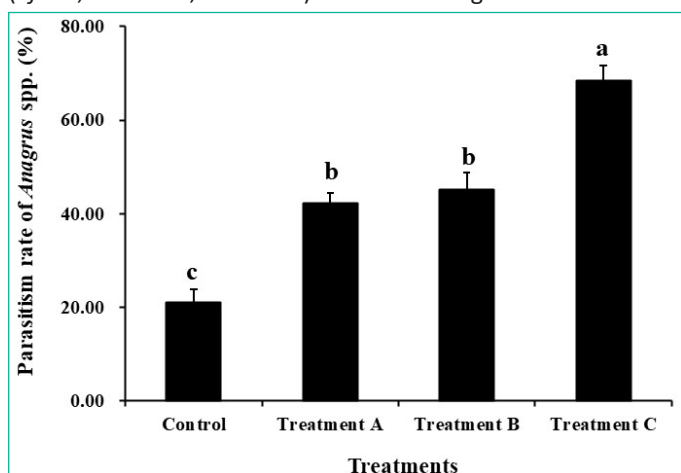


Figure 2: Influence of different treatments of the *Leersia sayanuka* bank plant system on the parasitism rate of *Anagrus* spp. in rice fields (egg trapping method, booting stage). Treatment A: a 50cm wide and 1 m long *L. sayanuka* strip was planted in the rice field next to the ridge; Treatment B: a 50 cm wide and 5 m long strip of *L. sayanuka* was planted in the rice field next to the ridge; Treatment C: a 50 cm wide and 5 m long strip of *L. sayanuka* was planted in the rice field next to the ridge and *Sesamum indicum* seeds were planted on the ridge; Control: Conventional ridges lacking *L. sayanuka* and *S. indicum* were utilized. The values showed are means (\pm SE) for each treatment. Different lowercase letters indicate significant differences between treatments ($P < 0.05$).

in the parasitism rates of *Anagrus* spp. in rice fields across different treatments, with parasitism rates of *Anagrus* spp. in rice fields in the 5 m spaced *L. sayanuka* combined with *S. indicum* treatment being significantly higher than those in the other three treatments. Moreover, there was no significant difference between the 5 m spaced *L. sayanuka* treatment and the 1 m spaced *L. sayanuka* treatment in rice fields, but they were significantly higher than the control treatment ($df = 3, F = 49.399, P < 0.001$) (Figure 2).

Effect of Various Treatments of The *L. Sayanuka* Bank Plant System on Spiders in Rice Fields

There were significant differences in the impacts of different treatments on the population count of spiders in the rice fields. The population count of spiders in the 5 m spaced *L. sayanuka* plus *S. indicum* treatment was significantly higher than the other three treatments, while there was no significant difference between the 5 m spaced *L. sayanuka* treatment and the 1 m spaced *L. sayanuka* treatment in the rice fields. However, these treatments had significantly higher counts than the control treatment at the tillering stage (tillering stage: $df = 3, F = 6.265, P = 0.001$; grain filling stage: $df = 3, F = 9.226, P < 0.001$) (Figure 3).

Effectiveness of Different Treatments of The *L. Sayanuka* Bank Plant System for Field Control of Rice Planthoppers

Significant differences existed in the field control efficacy of different treatments on rice planthoppers. At the rice tillering stage, the number of rice planthoppers was significantly lower in the 50 cm wide 5 m long *L. sayanuka* combined with *S. indicum*, 50 cm wide 5 m long *L. sayanuka*, and 50 cm wide 1 m long *L. sayanuka* treatments compared to the control treatment ($df = 3, F = 17.547, P < 0.001$). At the rice tillering stage, there was no significant difference between the 50 cm wide 5 m long *L. sayanuka* combined with *S. indicum* treatment and the 50 cm wide 5 m long *L. sayanuka* strip treatment paddy fields regarding the number of rice planthoppers counts in the paddy fields. The number of rice planthoppers in 50 cm wide 5 m long *L. sayanuka* combined with *S. indicum* treated paddy fields was

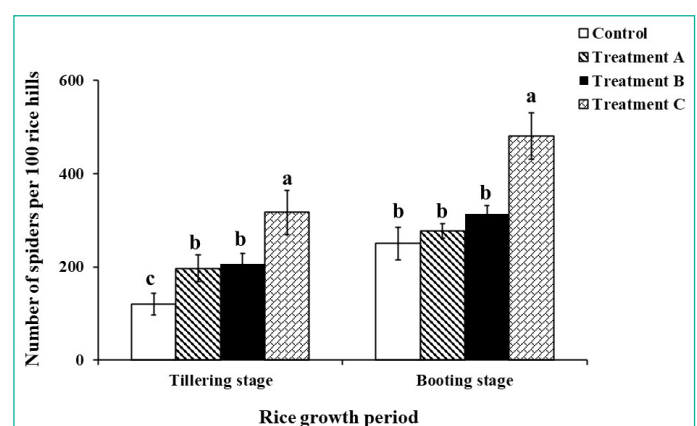


Figure 3: Influence of different treatments of the *Leersia sayanuka* bank plant system on the count of spiders in rice fields (patting method). Treatment A: a 50cm wide and 1 m long *L. sayanuka* strip was planted in the rice field next to the ridge; Treatment B: a 50 cm wide and 5 m long strip of *L. sayanuka* was planted in the rice field next to the ridge; Treatment C: a 50 cm wide and 5 m long strip of *L. sayanuka* was planted in the rice field next to the ridge and *Sesamum indicum* seeds were planted on the ridge; Control: Conventional ridges lacking *L. sayanuka* and *S. indicum* were utilized. The values showed are means (\pm SE) for each treatment. Different lowercase letters indicate significant differences ($P < 0.05$) among different treatments at the same rice fertility period.

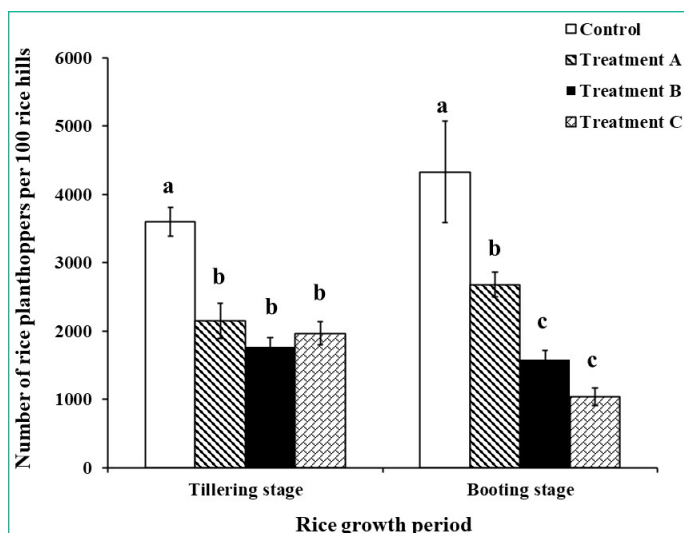


Figure 4: Effectiveness of different treatments of the *Leersia sayanuka* bank plant system for field control of rice planthoppers in rice fields (patting method). Treatment A: a 50cm wide and 1 m long *L. sayanuka* strip was planted in the rice field next to the ridge; Treatment B: a 50 cm wide and 5 m long strip of *L. sayanuka* was planted in the rice field next to the ridge; Treatment C: a 50 cm wide and 5 m long strip of *L. sayanuka* was planted in the rice field next to the ridge and *Sesamum indicum* seeds were planted on the ridge; Control: Conventional ridges lacking *L. sayanuka* and *S. indicum* were utilized. The values showed are means (\pm SE) for each treatment. Different lowercase letters denote significant differences ($P < 0.05$) among different treatments at the same rice fertility period.

lower than that of 1 m *L. sayanuka* treated paddy fields with no significant difference but significantly lower levels than control paddy fields ($df = 3$, $F = 30.624$, $P < 0.001$) (Figure 4).

Discussion

As an innovative method of traditional biological control, bank plant systems include the artificial propagation of non-crop pests on non-cash crops as alternative hosts for natural enemies. This is accompanied by the mass expansion of natural enemies, aiming to achieve sustained control of outbreaks of major pests during the growing season and avoiding chemical pesticides [20]. Even in environments with low or absent pest populations, natural enemies can maintain high population via alternative hosts. This characteristic is what makes bank plants more preventive and long-lasting [10].

In addition, this strategy is more labor and cost-efficient than other biological control strategies [18,20]. Numerous studies have been conducted on bank plant systems, but most are focused on indoor or greenhouse conditions [11,21,22]. Large areas of field crops must account for additional influencing factors and feasibility, including variable and unstable environmental factors, compatibility of the bank plant system with the crop system, and benefits to farmers.

Some studies have confirmed that *N. muiri* cannot establish a sustained population on rice, although it can complete generational development on rice [18]. The population of *N. muiri* around the paddy ecosystem is very high, according to Luo *et al.* [17], who examined *N. lugens* Stål under the forecasting light in five locations across four provinces of China, including Guangxi, Hunan, Jiangxi, and Zhejiang.

They found that the proportion of *N. muiri* in the *Nilaparvata* spp. on the lamps throughout 2008 and 2009 was over 40%, and the number of *N. muiri* exceeded the number of *N. lugens* in Jiangxi, Hunan, and Zhejiang before September. Among weeds

in non-rice habitats, *L. sayanuka* is the most suitable host for *N. muiri* [23]. Integrating *L. sayanuka* into the paddy ecosystem as an egg parasitoid bank can continuously release *A. nilaparvatae* into the paddy field to control rice planthoppers. During overwintering, *L. sayanuka* acts as an efficient overwintering host that can accommodate a higher density of overwintering natural enemies than other weeds [18]. Moreover, the *N. muiri* overwinters locally and early, with nymphs hatching in March and oviposition occurring in April, offering hosts for the overwintering *Anagrus* spp., which builds up sizable populations prior to the mass migrations of rice planthoppers. This study demonstrated that planting 50 cm wide strips of *L. sayanuka* for over 1 m along the edge of the paddy field had a significant controlling effect on rice planthoppers in the paddy field, indicating the efficiency of this as a bank plant system.

The spatial pattern of non-crop habitats impacts the composition, structure, diversity, and dynamics of natural enemies in crop habitats [24-26]. Different species of natural enemies show varied responses to different complex habitats [27-29]. The results of this study showed that the "*L. sayanuka*, *N. muiri*, *A. nilaparvatae*" bank plant system combined with the nectar plant *S. indicum* significantly increased the population of *Anagrus* spp. in the paddy field, and enhanced its egg parasitism rate of the rice planthoppers, which in turn significantly enhancing the control effect of the rice planthoppers in the paddy field.

Takada *et al.* [30] suggested that *Echinochloa crus-galli* and *Schoenoplectus juncooides* on the paddy field margins contribute to the spread of the rice pest *Stenotus rubrovittatus*, which can exacerbate the damage to rice near these two grasses. This system may pose a risk as it may climb into the rice bushes and compete for water and fertilizer, affecting rice yield. However, in this experiment, *L. sayanuka* did not grow as rapidly as *Leersia hexandra* Swartz (a local noxious weed), and grew *in situ* before rice plants elongation stage. In contrast, after rice elongation stage, *L. sayanuka* growth was inhibited by rising temperatures, and it did not invade the rice.

In the practical application of the bank plant system of "*L. sayanuka*, *N. muiri*, *A. nilaparvatae*", *N. muiri* is subject to predation by natural enemies (e.g., spiders). The use of this system will greatly impact the ecology of rice fields and the trophic relationships of the arthropod community. *L. sayanuka* is also a host for *Cnaphalocrocis medinalis*, and eggs laid by *C. medinalis* and larvae on *L. sayanuka* can act as a natural enemy host for rice Lepidopteran pests [31]. This combines them with egg parasitoids and larvae parasitoids (e.g., *Trichogramma japonicum*, *Trichogramma chilonis*, and *Apanteles cypris*), offering another possible benefit of planting *L. sayanuka* strips in paddy field margins as a bank for rice stem borer natural enemies. This means that *L. sayanuka* is a bank plant for rice stem borers as well as a bank plant for rice planthopper control.

Artificial release of *Trichogramma* parasitoids for rice stem borer control is on the rise in China, but the high cost of unsustainable artificial release mode of *Trichogramma* parasitoids impacts the widespread dissemination and control efficacy of artificial releases of *Trichogramma* parasitoids. In contrast, planting strips of *L. sayanuka* likely has an important field conservation role for *Trichogramma* parasitoids released into rice fields, which is another possible positive influence of *L. sayanuka*.

Author Statements

Author Contributions

X.G., Q.Z. and M.R. were mainly responsible for writing the full text; P.Z. was mainly responsible for the structure of the paper; X.G., Q.Z., M.R., B.C., X.H. and X.Z. were mainly responsible for the field experiment. X.G., X.Z. and P.Z. were mainly responsible for data processing. All authors have read and agreed to the published version of the manuscript.

Funding

This work was supported by the National Key Research and Development Program, China (No. 2021YFD1401100 and No. 2023YFD1400804), the Zhejiang Key Research and Development Program, China (No. 2022C02047), the Zhejiang Collaborative Promotion Plan for Major Agricultural Technologies (No. 2023XTGLY0101), and the Zhejiang Normal University ‘Shuanglong Scholar’ Research Start-up Fund (No. YS304021920).

Data Availability Statement

Data is contained within the article.

Conflicts of Interest

The authors declare that there are no conflicts of interest.

References

- Gurr GM, Wratten SD, Landis DA, You M. Habitat management to suppress pest populations: progress and prospects. *Annu Rev Entomol.* 2017; 62: 91–109.
- Allen WJ, Bufford JL, Barnes AD, Barratt BIP, Deslippe JR, Dickie IA, et al. A network perspective for sustainable agroecosystems. *Trends Plant Sci.* 2022; 27: 769–780.
- Settele J, Biesmeijer J, Bommarco R. Switch to ecological engineering would aid independence. *Nature.* 2008; 456: 570.
- Zhu PY, Zheng XS, Johnson AC, Chen GH, Xu HX, Zhang FC, et al. Ecological engineering for rice pest suppression in China. A review. *Agron Sustain Dev.* 2022; 42: 69.
- Xu HX, Zheng XS, Tian JC, Lai FX, He JC, Lv ZX. Advances in the development and application of control technologies for insect pest management in paddy fields in China. *J Plant Prot.* 2017; 44: 925–939.
- Zhao J, Cai WL, Shen LY, Zhu HY, Pu L, Xie MQ, et al. Current situation and prospect of green rice pest control technology. *J Huazhong Agric Univ.* 2022; 41: 92–104.
- Yu XP, Hu C, Heong KL. Parasitization and preference characteristics of egg parasitoids from various habitats to homopterans. *Acta Entomol Sin.* 1998; 41: 41–47.
- Skellern MP, Clark SJ, Ferguson A, Watts NP, Cook SM. Banker plant bonuses? The benefits and risks of including brassicas in field margins to promote conservation biocontrol of specialist pests in oilseed rape. *Insects.* 2023; 14: 349.
- Zhang R, Ji D, Zhang Q, Jin L. Evaluation of eleven plant species as potential banker plants to support predatory *Orius sauteri* in tea plant systems. *Insects.* 2021; 12: 162.
- Chen X, Jaworski CC, Dai HJ, Liang YY, Guo XJ, Wang S, et al. Combining banker plants to achieve long-term pest control in multi-pest and multi-natural enemy cropping systems. *J Pest Sci.* 2022; 95: 685–697.
- Pan MZ, Liu TX. Banker-plant system for biological control of pests in greenhouse-grown crops. *Chin J Appl Entomol.* 2019; 56: 917–926.
- Zhu PY, Zheng XS, Xie G, Chen GH, Lu ZX, Gurr G. Relevance of the ecological traits of parasitoid wasps and nectariferous plants for conservation biological control: a hybrid meta-analysis. *Pest Manag Sci.* 2020; 76: 1881–1892.
- Yuan LP. Development of hybrid rice to ensure food security. *Rice Sci.* 2014; 21: 1–2.
- Gurr G, Liu J, Read DMY, Catindig J, Cheng JA, Lan LP, et al. Parasitoids of Asian rice planthopper (Hemiptera: Delphacidae) pests and prospects for enhancing biological control by ecological engineering. *Ann Appl Biol.* 2011; 158: 149–176.
- Shi LQ, Liu DW, Qiu LM, Jiang ZW, Zhan ZX. Evaluation of the parasitism capacity of a thelytoky egg parasitoid on a serious rice pest, *Nilaparvata lugens* (Stål). *Animals.* 2023; 13: 12.
- Stehle S, Schulz R. Agricultural insecticides threaten surface waters at the global scale. *Proc Natl Acad Sci.* 2015; 112: 5750–5755.
- Luo J, Fu Q, Lu ZJ, Wu CQ, Li YB, Duan DK, et al. Population dynamics of *Nilaparvata lugens* and its two sibling species under black light trap. *Chin J Rice Sci.* 2010; 24: 315–319.
- Zheng XS, Lu YH, Zhu PY, Zhang FC, Tian JC, Xu HX, et al. Use of banker plant system for sustainable management of the most important insect pest in rice fields in China. *Sci Rep.* 2017; 7: 45581.
- Zheng XS, Tian JC, Zhong LQ, Xu HX, Lü ZX. A banker plant system of ‘*Leesia sayanuka*-*Nilaparvata muiri*-*Tyrtthus chinensis*’ to control rice planthoppers. *Chin J Appl Ecol.* 2017; 28: 941–946.
- Frank SD. Biological control of arthropod pests using banker plant systems: past progress and future directions. *Biol Control.* 2010; 52: 8–16.
- Sullivan CF, Davari A, Kim JS, Parker BL, Skinner M. Evaluation of a guardian plant system to suppress *Frankliniella occidentalis* (Thysanoptera: Thripidae) in greenhouse ornamentals. *Pest Manag Sci.* 2023; 79: 3559–3569.
- Fauteux A, Fournier M, Soares AO, Lucas E. The right banker plant for the right application: Comparison of three candidates for aphid biocontrol, barley (*Hordeum vulgare* L.), corn (*Zea mays* L.), and finger millet (*Eleusine coracana* (L.) Gaertn). *Pest Manag Sci.* 2024; 80: 3293–3300.
- Cui YL, He JC, Luo J, Lai FX, Fu Q. Host plants of *Nilaparvata muiri* China and *N. bakeri* (Muir), two sibling species of *N. lugens* (Stål). *Chin J Rice Sci.* 2013; 27: 105–110.
- Costamagna AC, Landis D, Difonzo C. Suppression of soybean aphid by generalist predators results in a trophic cascade in soybeans. *Ecol Appl.* 2007; 17: 441–451.
- Wang J, Yang Y, Li Y, Jin Z, Desneux N, Han P, et al. Direct and indirect effects of banker plants on population establishment of *Harmonia axyridis* and aphid control on pepper crop. *Front Plant Sci.* 2022; 13: 1083848.
- Sow A, Soti V, Thiaw I, Brévault T. Non-crop habitats concurrently drive crop colonization by the millet head miner and regulation by natural enemies. *Basic Appl Ecol.* 2022; 64: 45–56.
- Gardiner MM, Landis DA, Gratton C, Schmidt N, O’Neal M, Mueller E, et al. Landscape composition influences the activity density of Carabidae and Arachnida in soybean fields. *Biol Control.* 2010; 55: 11–19.
- Woodcock BA, Redhead J, Vanbergen AJ, Hulmes L, Hulmes S, Peyton J, et al. Impact of habitat type and landscape structure on biomass, species richness and functional diversity of ground beetles. *Agricult Ecosyst Environ.* 2010; 139: 181–186.

29. Zhang YF, Bian ZX, Wang S, Guo XY, Zhou W. Effect of agricultural landscape pattern on the qualitative food web of epigeic arthropods in low hilly areas of northern China. *Ecol Model.* 2024; 488: 110574.
30. Takada MB, Yoshioka A, Takagi S, Iwabuchi S, Washitani I. Multiple spatial scale factors affecting mirid bug abundance and damage level in organic rice paddies. *Biol Control.* 2012; 60: 169–174.
31. Zheng XS, Tian JC, Yang YJ, Zhu PY, Li K, Xu HX, et al. The feasibility of using graminaceous weeds as a functional plant for controlling rice leaffolder (*Cnaphalocrocis medinalis*). *Sci Agr Sin.* 2017; 50: 4129–4137.