

## Clinical Image

# Late Discovery of an Anterior Polar Pyramidal Cataract

Hnich H\*, Mrad K, Serghini L, Hajji Z, Abdellah E and Berraho A

Department of Ophtalmology B, Hospital of Specialties, Rabat, Morocco

**\*Corresponding author: Hnich H**

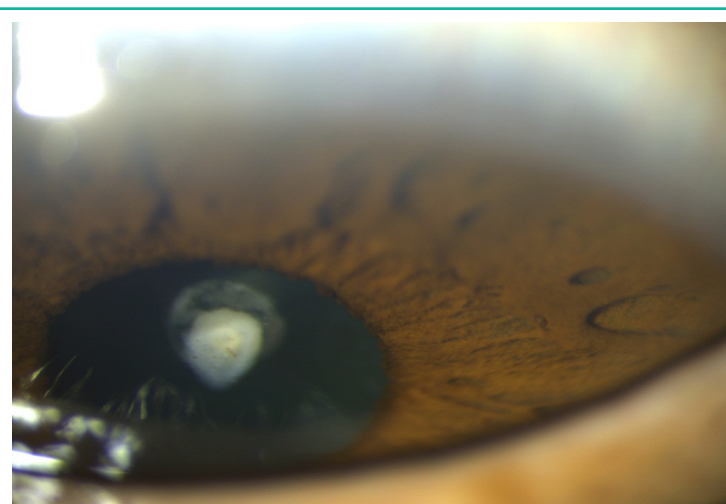
Head of Department, Department of visceral Surgery 1, Mohammed Military Hospital, Rabat, Morocco

**Received:** November 07, 2022; **Accepted:** December 14, 2022; **Published:** December 21, 2022

## Clinical Image

A 60 years old female patient with no medical history presented to our consultation for low visual acuity in the left eye since childhood, the best corrected visual acuity was 1/10 in the left eye and 8/10 in the right eye using monoyer chart, slit lamp examination showed mild cortical cataract in the right eye, and an anterior polar pyramidal cataract in the left eye (Figure 1) with no associated abnormalities in both eyes.

Understanding the poor visual postoperative outcome at this age, the patient refused any surgical procedure.



**Figure 1:** Slit lamp photo of the anterior segment the left eye showing pyramidal-shaped anterior polar lens opacity.