

## Clinical Image

# Multiple Sclerosis Caused by Post-Partum Depression

Gomes GHV<sup>1</sup>, da Costa e Souza RM<sup>2,3</sup> and Fernandes TMP<sup>2\*</sup>

<sup>1</sup>Department of Physical Therapy, Faculty of Medical Sciences, Brazil

<sup>2</sup>Cognitive Neuroscience and Behavior Program, Federal University of Paraiba, Brazil

<sup>3</sup>Department of Neurology, Emergency and Trauma Hospital, Brazil

\*Corresponding author: Thiago M. de Paiva Fernandes, Departamento de Psicologia, CCHLA-UFPB. Campus I, Cidade Universitária, CEP: 58051-90, João Pessoa - PB, Brazil

Received: May 12, 2017; Accepted: May 23, 2017;

Published: June 07, 2017

## Clinical Image

A 51-year-old white Brazilian female woman initially presented symptoms similar to migraine and chronic pain after the birth of her second child. After confusing diagnosis and continuous use of painkillers, the patient came for evaluation. A complete biopsychosocial and neurological evaluation was performed, where the imaging tests proved the existence of multiple sclerosis (MS). According to our knowledge, this is one of the first reported cases in the literature. Thus, our study highlights the importance of alerting

physicians in closely observing the variables presented in each neurological case. In the Figure 1, we observed a Flair MRI showing microangiopathy in the frontal horn of lateral ventricles. This image maybe not supports the current diagnosis. However, the detailed analysis of Figure 2 (SWI showing basal ganglia calcification), in conjunction with the clinical history presented helped us to distinguish this case from chronic pain or drug-induced hepatitis caused by chronic pain.

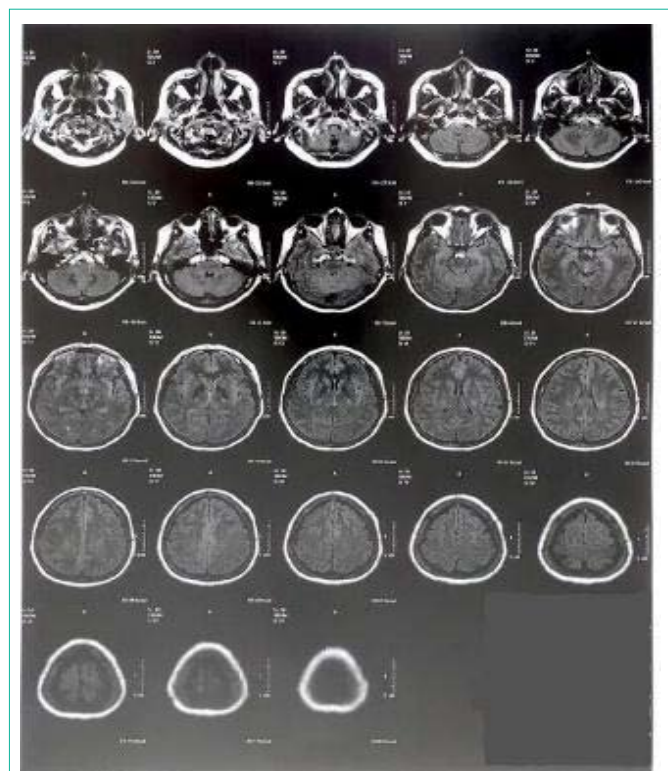


Figure 1: Flair MRI showing microangiopathy in the frontal horn.

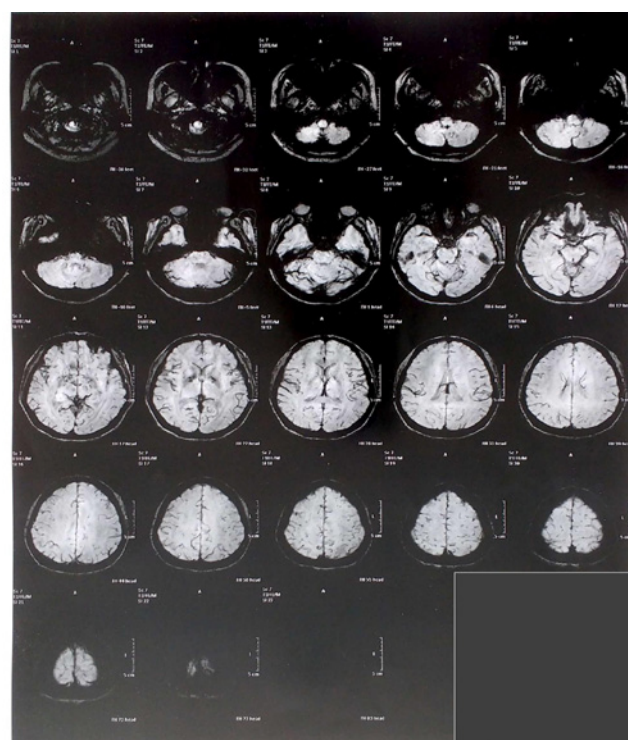


Figure 2: Susceptibility weighted imaging showing basal ganglia calcification.