

Research Article

# Augmentation of Regenerative Potential of Mesenchymal Stem Cells by Granulocyte-colony Stimulating Factor (G-CSF) Induced Mobilization

Hirose Y<sup>1,2</sup>, Murakami M<sup>1</sup>, Hayashi Y<sup>1,3</sup>, Osako Y<sup>1</sup>, Yamamoto T<sup>2</sup>, Gotoh M<sup>2</sup> and Nakashima M<sup>1\*</sup>

<sup>1</sup>Department of Dental Regenerative Medicine, Center of Advanced Medicine for Dental and Oral Diseases, National Center for Geriatrics and Gerontology, Japan

<sup>2</sup>Department of Urology, Nagoya University Graduate School of Medicine, Japan

<sup>3</sup>Department of Pediatric Dentistry, Aichi Gakuin University, Japan

\***Corresponding author:** Nakashima M, Department of Dental Regenerative Medicine, Center of Advanced Medicine for Dental and Oral Diseases, National Center for Geriatrics and Gerontology, 35 Gengo, Morioka, Obu, Aichi, 474-8511, Japan, Tel: +81-562-44-5651×5065; Fax: +81-562-46-8684; E-mail: misako@ncgg.go.jp

**Received:** July 18, 2014; **Accepted:** August 16, 2014;

**Published:** August 18, 2014

## Abstract

The development of a safe and efficient method for isolation of mesenchymal stem cell (MSC) subsets is essential for optimal stem cell therapy. The potential utility of granulocyte-colony stimulating factor (G-CSF) induced mobilization method has been demonstrated in isolation of MSC subsets from dental pulp. The mobilized dental pulp stem cells (MDPSCs) were enriched for MSC subsets with higher regenerative potential compared with colony-derived dental pulp stem cells (DPSCs). This investigation aimed to examine the efficacy of the G-CSF-induced mobilization method for isolation of MSC subsets from other tissues such as bone-marrow and adipose tissue. The mobilized MSCs represented significantly higher rate of CXCR4<sup>+</sup> and G-CSFR<sup>+</sup> cells, higher proliferation and migratory activity and higher expression of Sox2 than corresponding colony-derived MSCs. Trophic effects of mobilized MSCs, including enhanced proliferation, migration, anti-apoptosis, angiogenesis and neurite extension, were also higher in mobilized MSCs compared to colony-derived MSCs, correlating with higher expression of trophic factors. Each of mobilized MSCs induced higher angiogenesis/vasculogenesis and pulp regeneration in ectopic tooth transplantation model. Thus, the G-CSF induced mobilization method for isolation of MSC subsets is efficient and appears to be a significant advance independent of tissue origin.

**Keywords:** Dental pulp stem cells; Bone marrow-derived stem cells; Adipose-derived stem cells; Granulocyte-colony stimulating factor (G-CSF); Mobilization; Trophic factor; Pulp regeneration

## Introduction

MSCs present a promising tool for cell therapy, and are currently evaluated in clinical trials for myocardial infarction, stroke, meniscus repair, limb ischemia, graft-versus-host disease and autoimmune disorders [1]. MSCs have been found in many other tissues, including peripheral blood, dental pulp, adipose tissue, umbilical cord blood and corneal stroma [2]. Among these cell sources, bone marrow-derived stem cells (BMSCs) have been known for potential therapeutic use [2]. However, adipose-derived stem cells (ADSCs) are becoming an attractive alternative to BMSCs due to easy accessibility and availability in the body [3]. Recently, to obtain the MSCs in a closed system, new methods have been developed, including a MSC separation device for bone marrow [4] and Celution™ system for adipose tissue [5]. These devices have the advantage of direct application of the isolated MSCs without further expansion. Their stem cell properties, however, have been demonstrated to be similar to those of colony-derived MSCs [4,6]. Furthermore, a large amount of adipose tissue is necessary to isolate adipose MSCs by the Celution™ system [5]. Age-related decrease in the number of BMSCs is known [7], and functionally active ADSCs is reduced in obesity [8] and aged patients [9].

MSCs are heterogeneous subsets of stromal stem/progenitor cells [10]. Potential utility of some MSC subsets have been demonstrated for enhanced regeneration, including Lin<sup>-</sup>/c-kit<sup>+</sup> MSCs in infarcted

myocardium [11], STRO-1<sup>BRIGHT</sup>VCAM-1<sup>+</sup> population in bone formation [12], CD31<sup>-</sup> side population (SP) cells in ischemic cerebrum and ischemic hindlimb [13] and CD105<sup>+</sup> MSCs in pulpectomized tooth [14]. These MSC subsets, however, were isolated by flow cytometer, which has a risk of microbial contamination and unfavorable effects for clinical use [4]. CD34<sup>+</sup> MSCs by use of CliniMACS<sup>®</sup> are only available for clinical application [15].

We have recently developed a novel, efficient and safe method, using G-CSF-induced mobilization to isolate a therapeutically active subset of dental pulp stem cells (DPSCs) from a small amount of pulp tissue in canine [16] and human [17]. The subset of DPSCs, named mobilized DPSCs (MDPSCs), were enriched for C-X-C chemokine receptor type 4 (CXCR4) and granulocyte-colony stimulating factor (G-CSF) receptor (G-CSFR) positive cells, and demonstrated higher regenerative potential compared with non-isolated colony-derived DPSCs (DPSCs). There has been no study, however, on isolation of BMSC and ADSC subsets by G-CSF induced mobilization method. G-CSF stimulates *in vitro* migration of BMSCs, dependent on their G-CSFR expression [18]. G-CSF enhances migration of intravenously infused MSCs to infarcted heart in rat [19]. G-CSF application also shows significantly higher migration of c-kit<sup>+</sup> BMSCs towards ischemic heart tissue in an *in vitro* model [20]. A subpopulation, CD31<sup>-</sup> SP cells were isolated from porcine dental pulp, bone marrow and adipose tissue of the same individual using the same isolation

and culture method [13]. The aim of this investigation is to evaluate the efficacy of the G-CSF-induced mobilization method for isolation of MSC subsets from bone-marrow and adipose tissue and compared with dental pulp tissue. Therefore, we compared the stem cell properties, trophic effects, and regenerative potential of mobilized MSCs with corresponding colony-derived MSCs, respectively.

## Materials and Methods

This study was approved by the ethics committees and the animal care and use committees of the National Center for Geriatrics and Gerontology and Aichi Gakuin University. All experiments were conducted using the strict guidelines of the DNA Safety Programs.

### Cell isolation and culture conditions

The pulp tissue from premolar teeth, the bone marrow and adipose tissue were isolated from the same individual porcine mandible. Then, primary cells was cultured from each tissue with slight modification of our previous method [21]. In brief, approximately 1 g of pulp tissue, 3 g of bone marrow, and 5 g of adipose tissue were minced into pieces and then enzymatically digested in 0.2% collagenase (Worthington, Lakewood, NJ) for 30 min at 37°C. The cells were passed through 70 µm nylon mesh (Cell Strainer; BD Biosciences, Franklin Lakes, NJ) and their viability was determined by trypan blue staining of the cells. The isolated cells were plated at colony-forming density ( $\leq 1 \times 10^4$  cells/ml) on 35 mm dishes (BD Biosciences) in Dulbecco's Modified Eagle's Medium (DMEM) (Sigma Aldrich, St. Louis, MO) supplemented with 10% fetal bovine serum (FBS) (Life Technologies, Carlsbad, CA). These colony-derived dental pulp, bone marrow and adipose MSCs were named DPSCs, BMSCs and ADSCs, respectively.

The mobilized subsets of DPSCs, BMSCs and ADSCs (MDPSCs, MBMSCs and MADSCs) were further isolated by G-CSF (NEUTROGIN; Chugai Pharmaceutical Co., Ltd., Tokyo, Japan) induced stem cell mobilization [16,17]. Briefly, the upper chamber, Costar Transwell (Corning, Lowell, MA) which was chemically pretreated to prevent cell attachment, was inserted into 24-well tissue culture plate (BD Biosciences) as the lower chamber. The colony-derived MSCs (DPSCs, BMSCs and ADSCs) ( $1.5 \times 10^4$  cells/100 µl in DMEM) at the second passage of culture were added to the upper chambers and DMEM supplemented with 10% FBS and G-CSF (100 ng/ml) was added to the lower chambers. After 48 h of incubation, the medium was changed into DMEM supplemented with 10% FBS without G-CSF. Isolated mobilized MSCs and colony-derived MSCs were detached at 60-70% confluence by incubation with 0.05% Trypsin-EDTA (Life Technologies) and subcultured at a 1:4 dilution under the same conditions. In this study, all cells were cultured in a humidified 37°C, 5% CO<sub>2</sub> incubator (Panasonic, Osaka, Japan). To evaluate the colony-forming efficiency of each mobilized MSCs and colony-derived MSCs,  $5 \times 10^2$  cells/ml were seeded at the 5 th passage of culture on 6 cm dish in DMEM supplemented with 10% FBS. After 4 days of culture, aggregates of  $\geq 10$  cells were scored as colonies.

### Flow cytometric analysis

The mobilized MSCs were characterized at the 6-7 th passage of culture, in comparison with colony-derived MSCs by flow cytometry (FACS Canto II; BD Biosciences). They were immunolabeled for 60 min at 4°C with a rabbit IgG negative control (Alexa488) (#4340) (Cell Signaling technology, Beverly, MA), a mouse IgG2a negative

control (FITC) (RTK4530) (Miltenyi Biotec GmbH, Bergisch Gladbach, Germany), a mouse IgG2b negative control (Alexa488) (MCA928PE) (Abcam, Cambridge, UK), and the antibodies against CD105 (Alexa488) (orb10285) (Biobyte, Cambridge, UK), CXCR4 (FITC) (12G5) (R&D Systems, Inc., Minneapolis, MN), G-CSFR (Alexa488) (S1390) (Abcam). Only viable cells as determined by propidium iodide (PI) exclusion were gated and analyzed.

### Real-time RT-PCR for stem cell makers, and angiogenic/neurotrophic factors

Total RNA was extracted with Trizol (Life Technologies) from each of the stem cell sources. First-strand cDNA syntheses were performed on the total RNA of these cells by reverse transcription using the ReverTra Ace-α (Toyobo, Tokyo, Japan) at 30°C for 10 min, 42°C for 20 min and 99°C for 5 min after DNase I treatment (Roche Diagnostics, Pleasanton, CA) at 37°C for 20 min and 0.2 M EDTA treatment (Toyobo) at 70°C for 20 min. Real-time RT-PCR was performed at 95°C for 10 s, 65°C for 15 s and 72°C for 8 s. Amplified cDNA were labeled with Light Cycler-Fast Start DNA master SYBR Green I (Roche Diagnostics) in a Light Cycler (Roche Diagnostics). As stem cell markers, *Sox2* and *chemokine (C-X-C motif) receptor 4 (CXCR4)* were examined. The mRNA expression of the angiogenic and neurotrophic factors, *matrix metalloproteinase (MMP)-3*, *vascular endothelial growth factor (VEGF)*, *granulocyte-colony stimulating factor (G-CSF)*, *brain-derived neurotrophic factor (BDNF)*, *glial cell derived neurotrophic factor (GDNF)*, and *neuropeptide Y (NPY)* were also performed. The primers were used as demonstrated previously [14,22,23] except *G-CSF* (Forward: 5' CTGGACTGGGAGGTAGTTG 3'; Reverse: 5' CTTAGGGTAGGGTTCCTACTC 3'). The mRNA expression was normalized with  $\beta$ -*actin*. The RT-PCR product of G-CSF was subcloned into the pGEM-T easy vector (Promega, Madison, WI) and confirmed by sequencing.

### Migration and proliferation assays

The migratory activity of each of mobilized MSCs to G-CSF was compared with corresponding colony-derived MSCs by horizontal chemotaxis assay using TAXIScan-FL (ECI, Inc., Kanagawa, Japan) as described previously [14]. Each of MSCs ( $1 \times 10^5$  cells/ml) was placed into the single hole, and 10 µg/ml of chemotactic factor (1 µl) was placed into the contra-hole. The video images of cell migration were taken for 24 h.

The proliferation activity in response to FBS of each of mobilized MSCs was compared with corresponding colony-derived MSCs at the 6-7 th passage of culture at  $1 \times 10^3$  cells per 96 well in the presence of 10% FBS. Cell Counting Kit-8 (Dojindo, Kumamoto, Japan) was added to the 96-well plate (BD Biosciences) and the cell numbers were measured at 2, 12, 24, 36 and 48 h of culture by Appliskan (Thermo Scientific, Waltham, MA) with the excitation filter set at 450 nm.

### Endothelial cell differentiation and neuronal differentiation in vitro

The differentiation potential into endothelial cell [23] and neuron [22] was performed with slight modification of our previous method. In endothelial cell differentiation, each of MSCs at the 6-7 th passage of culture  $1.0 \times 10^4$  cells/50 µl were seeded on a 96-well plate spread out the matrigel (BD Biosciences) in inducer medium. Network formation was observed after 9 h cultivation. The mean lengths of

networks of cords and tube-like structures were measured by Suite V3 (Leica).

For neuronal differentiation, each of MSCs at the 6-7 passage of culture  $1.0 \times 10^5$  cells/dish had cultured on non-coated 35 mm dish in Neurosphere Progenitor Basal Medium (NPBM) (Lonza) with NP Maintenance Medium SingleQuots™ Kit (Lonza) (contains hEGF and hFGF) and NP Supplement SingleQuots™ Kit (Lonza) (contains NSF-1 and GA) as the addition factor for 11 days, designated for neurosphere formation. The average diameter of neurospheres was measured under an inverted microscope (Leica) using Suite V3 (Leica). The neurospheres were triturated using polished glass pipettes, and the obtained single-cell suspension had cultured in Gelatin-Coated 35 mm Dish (Iwaki, Shizuoka, Japan) in inducer medium. The medium was changed every 3 days. Expression of *neurofilament*, *neuromodulin* and *sodium channel, voltage-gated type I  $\alpha$  (SCN1 $\alpha$ )* mRNA was analyzed by real-time RT-PCR as described above at 25 days after cultivation. The primers were used as demonstrated previously [22,23]. Immunocytochemical analysis was also performed. The cells were fixed for 15 min in 4% paraformaldehyde in PBS at room temperature, reacted with mouse monoclonal neurofilament antibody (2F11) (Dako, Carpinteria, CA) (1: 100) for 1 h at room temperature, and followed by biotinylated anti-mouse IgG secondary antibody (Vector Laboratories, Burlingame, CA) for 30 min at room temperature. The cells were developed with the VECTASTAIN™ Elite ABC reagent (Vector) and ImmPACT™ DAB Peroxidase Substrate (Vector).

### Effect of the conditioned media

Each of MSCs at the 6-7 th passage of culture 60-70% confluence, the culture medium was switched to DMEM without serum, and the conditioned media (CM) were collected 24 h later and concentrated approximately 25-fold by an Amicon Ultra-15 Centrifugal Filter Unit with an Ultracel-3 membrane (Millipore, Billerica, MA). The protein concentration of the CM was determined by BradfordUltra™ (Expedeon, Cambridge, UK).

To assess the proliferative effect of the CM, NIH3T3 cells were seeded at  $1 \times 10^3$  cells/well in a 96-well plate in DMEM supplemented with 5  $\mu$ g/ml of the each CM without serum. Cell Counting Kit-8 was added to the 96-well plate, and the cell numbers were measured by Appliskan as described above. NIH3T3 cells (clone 5611) were purchased from Japanese Collection of Research Bioresources (JCRB) Cell Bank (Tokyo, Japan).

To examine the stimulatory effect of each CM on migratory activity of NIH3T3 cells, a horizontal chemotaxis assay was performed as described above.

The inductive potential of each CM into endothelial differentiation was assessed in the human umbilical vascular endothelial cell (HUVEC) line (7F3415) (Lonza). After HUVEC reached 60-70% confluence on 35 mm dish, the culture medium was switched to DMEM containing 2% FBS, 5 $\mu$ g/ml the conditioned medium from each of MSCs, 22.5  $\mu$ g/ml heparin, 1  $\mu$ g/ml ascorbic acid and 0.2  $\mu$ g/ml hydrocortisone and had cultured for 11 days. Immunohistochemical staining was performed with mouse anti-Cadherin 5 (VE-Cadherin or CD144) (75) (BD biosciences) (1: 200) for 1h at room temperature and Alexa Fluor 488 goat anti-mouse IgG (H+L) secondary antibody

(Life Technologies) (1: 200) for 1h at room temperature. The mean lengths of networks of cords and tube-like structures were measured by BZ-9000 analysis software (KEYENCE, Osaka, Japan) after counterstaining with 5  $\mu$ g/ml Hoechst 33342 (Sigma-Aldrich).

The enhanced effect of each CM on neurite outgrowth was assessed in the human neuroblastoma cell line (TGW cells) (clone 0618) (JCRB Cell Bank). TGW cells were plated at  $5.0 \times 10^4$  cells/ml on 35 mm dishes and were cultured in DMEM supplemented with 10% FBS for 24 h. Then, they were cultured supplemented with the each CM without serum for 12 h. For quantification of neurite outgrowth, the mean neurite length was measured by Suite V3 (Leica). At least, the neurite length of 100 cells was counted per sample.

To assess the immunomodulatory effect of the each CM, a mixed lymphocyte reaction (MLR) assay was performed as described previously [14]. Autologous peripheral blood mononuclear cells (PBMCs) and allogenic stimulator PBMCs from human were co-cultured at  $1 \times 10^5$  cells per well in a 96-well plate in RPMI-1640 without arginine, leucine, lysine and phenol red (Sigma-Aldrich) supplemented with 5  $\mu$ g/ml of the each CM. The cell numbers were measured using Cell Counting Kit-8 at 2, 12, 24 and 36 h as described above.

To assess the anti-apoptotic effect of the each CM, NIH3T3 cells were incubated with 500 nM staurosporine (Sigma-Aldrich) in DMEM supplemented with 5  $\mu$ g/ml of the each CM for 3 h. The cells were harvested, treated with Annexin V-FLUOS Staining Kit (Roche Diagnostics) and analyzed by flow cytometry.

### An experimental model of ectopic tooth transplantation model

An ectopic tooth transplantation model was used to evaluate regenerative potential. The porcine incisors were extracted, and their roots were cut out (6 mm in length, 1 mm in width). One end was sealed with zinc phosphate cement (GC, Tokyo, Japan). Each of MSCs ( $2 \times 10^5$  cells/100  $\mu$ l at the 6-7 th passage of culture) was injected into the roots with collagen TE (Nitta Gelatin). Each of 4 roots with implanted MSCs was transplanted subcutaneously into 5-week-old severe combined immunodeficiency (SCID) mice (CB17; CLEA, Tokyo, Japan). Each root was harvested for histological and molecular biological analyses on day 21.

For histological analysis, all roots were fixed in 4% paraformaldehyde (Sigma-Aldrich) at 4°C overnight and embedded in paraffin wax (Sigma-Aldrich) after demineralization with Kalkitox™ (Wako, Osaka, Japan) at 4°C for a week. The paraffin sections (5  $\mu$ m in thickness) were stained with hematoxylin and eosin (HE). Three sections at 150  $\mu$ m intervals from a total 12 roots of each MSC transplantation were examined for relative amounts of regenerative tissue, as described previously [13]. To evaluate the cell densities, nuclear staining with 5  $\mu$ g/ml Hoechst 33342 (Sigma-Aldrich) was performed.

For neovascularization analysis, immunostaining with rat monoclonal RECA1 antibody (HIS-52) (Monosan, San Diego, CA) (1: 200) for 1 h at room temperature and TEXIS RED™ anti-rabbit IgG (H+L) secondary antibody (Vector Laboratories) (1: 200) for 1 h at room temperature were performed as described previously [13].

**Table 1:** Flow cytometric analysis of cell surface markers on mobilized MSCs (MDPSCs, MBMSCs and MADSCs) compared with each of colony-derived MSCs (DPSCs, BMSCs and ADSCs) at the 6-7th passage of culture. Data are expressed as the means  $\pm$  SD of 3 determinations. The experiments were repeated three times (3 lots), and one representative experiment is presented.

		MDPSCs	DPSCs	MBMSCs	BMSCs	MADSCs	ADSCs
CD105		98.4 $\pm$ 1.4	90.6 $\pm$ 4.4	98.1 $\pm$ 1.8	91.1 $\pm$ 5.3	98.2 $\pm$ 1.1	89.8 $\pm$ 5.4
CXCR4	<sup>†</sup> **	14.1 $\pm$ 1.1	5.1 $\pm$ 1.1	** 12.0 $\pm$ 1.2	2.7 $\pm$ 0.9	** 11.7 $\pm$ 1.2	3.6 $\pm$ 1.1
G-CSFR	**	63.4 $\pm$ 3.7	20.1 $\pm$ 1.5	** 41.1 $\pm$ 3.1	12.7 $\pm$ 1.5	*** 55.9 $\pm$ 2.8	20.9 $\pm$ 2.3

CXCR4, chemokine (C-X-C motif) receptor 4; G-CSFR, granulocyte colony-stimulating factor receptor.

(\* $p$  < 0.05, \*\* $p$  < 0.01, versus each colony-derived MSCs; <sup>†</sup> $p$  < 0.05, versus MADSCs; <sup>‡</sup> $p$  < 0.05, versus MBMSCs; <sup>#</sup> $p$  < 0.05, versus MBMSCs)

**Table 2:** Relative mRNA expression of stem cell markers, angiogenic and/or neurotrophic factors in mobilized MSCs (MDPSCs, MBMSCs and MADSCs) compared with corresponding colony-derived MSCs (DPSCs, BMSCs and ADSCs). The experiments were repeated three times (3 lots). Data are expressed as the means  $\pm$  SD of 3 determinations.

	MDPSCs/DPSCs	MBMSCs/BMSCs	MADSCs/ADSCs
<i>Sox2</i>	* 4.3 $\pm$ 0.7	* 3.8 $\pm$ 0.4	* 2.6 $\pm$ 0.4
<i>CXCR4</i>	* 4.5 $\pm$ 0.9	** 6.1 $\pm$ 0.7	** 5.1 $\pm$ 0.5
<i>MMP3</i>	* 4.5 $\pm$ 0.7	* 3.8 $\pm$ 0.7	* 3.2 $\pm$ 0.6
<i>VEGF</i>	* 3.7 $\pm$ 0.5	* 4.5 $\pm$ 0.8	* 3.9 $\pm$ 0.7
<i>G-CSF</i>	* 1.8 $\pm$ 0.4	1.2 $\pm$ 0.3	1.1 $\pm$ 0.3
<i>BDNF</i>	* 4.7 $\pm$ 0.6	* 4.5 $\pm$ 0.7	** 7.0 $\pm$ 0.7
<i>GDNF</i>	* 2.9 $\pm$ 0.4	* 4.9 $\pm$ 0.7	* 3.9 $\pm$ 0.6
<i>NPY</i>	0.9 $\pm$ 0.2	0.9 $\pm$ 0.3	0.8 $\pm$ 0.3

*CXCR4*, chemokine (C-X-C motif) receptor 4; *MMP3*, matrix metalloproteinase-3; *VEGF*, vascular endothelial growth factor; *G-CSF*, granulocyte-colony stimulating factor; *BDNF*, brain-derived neurotrophic factor; *GDNF*, glial cell derived neurotrophic factor; *NPY*, Neuropeptide Y

(\* $p$  < 0.05, \*\* $p$  < 0.01, versus each colony-derived stem cells)

For molecular biological analysis, regenerated tissues were further isolated from each regenerated tissue at 21 days after transplantation. Total RNA was isolated and real-time RT-PCR amplifications were performed using markers for pulp tissue, *thyrotropin-releasing hormone degrading enzyme (TRH-DE)* [24] and *Syndecan3*, a marker for periodontal ligament, *periostin* and *periodontal ligament associated protein (PLAP)* as demonstrated previously [25]. The expression of these markers in the regenerated tissues was compared with that in normal pulp and periodontal ligament tissue from SCID mouse incisors.

To confirm that the regenerated tissue is functional pulp tissue, western blot analysis of the expression of TRH-DE was performed in each regenerated tissue at 21 days after transplantation as described previously [17]. Normal pulp tissue from the SCID mice incisors were used as a positive control. The anti-TRH-DE antibody (N-18) (1:1000) (sc-83177) (Santa Cruz Biotechnology Inc, CA) and anti- $\beta$ -actin antibody (RB-9421) (Neo-Markers, Fremont, CA) were used. The protein bands were detected by ImmunoStar<sup>®</sup>Zeta (Wako).

### Statistical analyses

Data are expressed as means  $\pm$  SD.  $P$  values were calculated using Student's  $t$  test and Tukey's multiple comparison test method in SPSS 21.0 (IBM, Armonk, NY).

## Results

### Isolation and characterization of mobilized MSCs

The morphology of the mobilized MSCs from all three tissue sources were stellate or spindle-shaped cells (Figure 1A). The mobilization efficiencies of mobilized MSCs, MDPSCs, MBMSCs and MADSCs were 17.5%  $\pm$  8.4, 8.4%  $\pm$  6.3 and 22.5%  $\pm$  6.3, respectively. MADSCs showed significantly higher mobilization

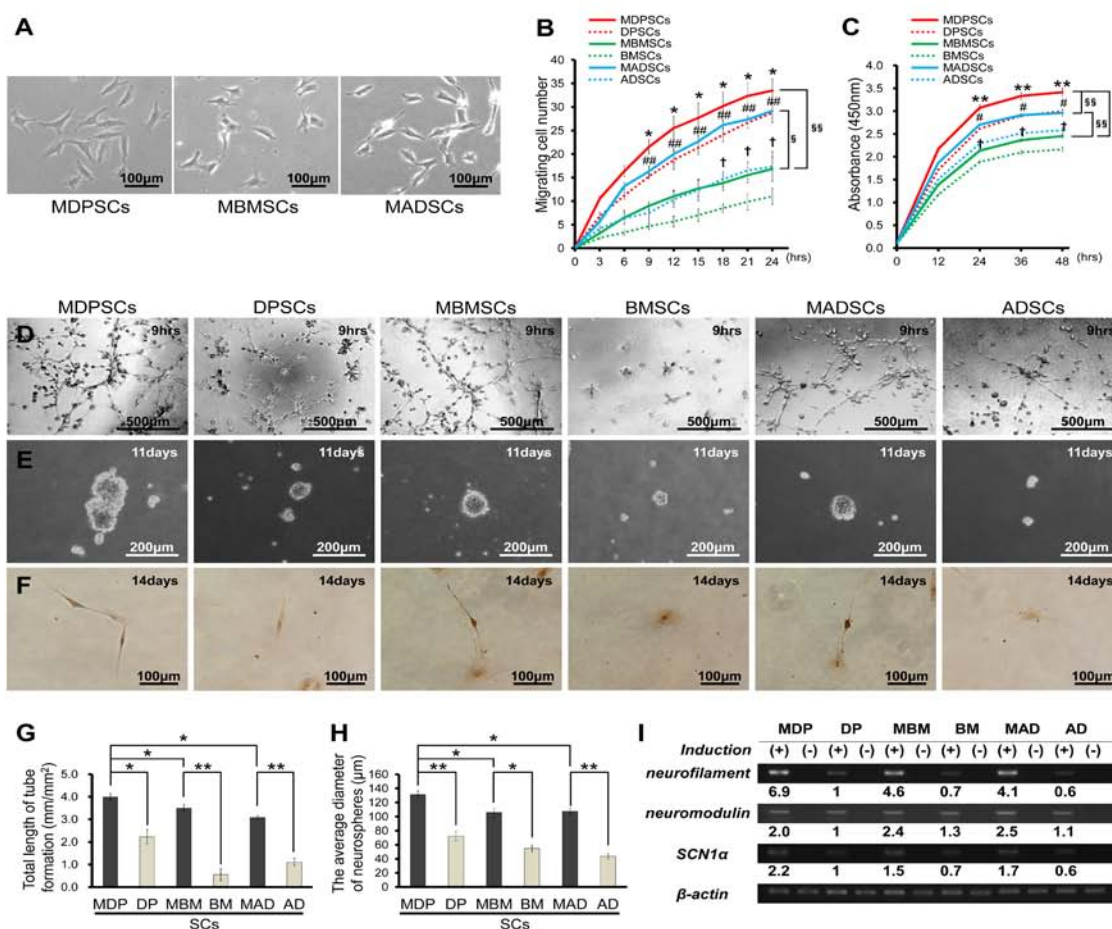
efficiency compared with MBMSCs. The limiting dilution analysis of the 5<sup>th</sup> passage culture showed that the frequencies of colony forming units (CFUs) in MDPSCs, MBMSCs and MADSCs were estimated to be 82.3%  $\pm$  2.8, 78.4%  $\pm$  1.5 and 75.8%  $\pm$  4.8, while those in DPSCs, BMSCs and ADSCs were 75.0%  $\pm$  3.8, 72.0%  $\pm$  3.7 and 67.1%  $\pm$  1.6, respectively. The colony-forming units of MBMSCs and MADSCs were significantly higher than those of BMSCs and ADSCs, respectively.

Evaluation of the "stemness" of mobilized MSCs was performed by flow cytometric analysis in comparison with that of corresponding colony-derived MSCs (Table 1). Mobilized DPSCs have previously been characterized as the higher rate of CXCR4 and G-CSFR positive cells compared to colony-derived DPSCs [16,17]. In this study, the positive rates of CXCR4 and G-CSFR of mobilized MSCs were also significantly higher compared with those of colony-derived MSCs, respectively. There was no significant difference in the CD105 positive rate between mobilized and colony-derived MSCs. The positive rate of CXCR4 of MDPSCs was significantly higher than that of MADSCs and that of G-CSFR of MDPSCs and MADSCs were significantly higher than that of MBMSCs.

The mRNA expression of the stem cell markers (*Sox2*, *CXCR4*) and angiogenic and/or neurotrophic factors (*MMP3*, *VEGF*, *BDNF*, *GDNF*) were significantly higher in mobilized MSCs compared to corresponding colony-derived MSCs (Table 2).

The migratory activities of mobilized MSCs, particularly MADSCs, were significantly higher than those of colony-derived MSCs, respectively. MDPSCs and MADSCs showed the higher migratory activities than MBMSCs (Figure 1B).

The proliferation activities were significantly higher in mobilized



**Figure 1:** Properties of mobilized MSCs. (A) The mobilized MSCs at second passage of culture on day 2. (Mobilized dental pulp MSCs, MDPSCs; mobilized bone marrow-derived MSCs, MBMSCs; mobilized adipose-derived MSCs, MADSCs). (B) The migratory activity to G-CSF and (C) proliferation activity of each of MSCs (\**p* < 0.05, \*\**p* < 0.01, MDPSCs versus DPSCs; †*p* < 0.05, ††*p* < 0.01, MBMSCs versus BMSCs; #*p* < 0.05, ##*p* < 0.01, MADSCs versus ADSCs; \$*p* < 0.05, \$\$*p* < 0.01). (D) The endothelial differentiation assay using the matrigel after 9 h induction. (E) Neurosphere formation after 11 days induction. (F) Neurite outgrowth property after 14 days induction of dissociated neurosphere cells. (G) The mean lengths of networks of cords and tube-like structures (\**p* < 0.05, \*\**p* < 0.01). (H) The average diameter of neurospheres. (I) *Neurofilament*, *neuromodulin* and *sodium channel, voltage-gated type I α (SCN1a)* mRNA expression. The experiments were repeated three times (3 lots), and one representative experiment is presented. Data are expressed as the means ± SD of 3 determinations.

MSCs than in corresponding colony-derived MSCs. MDPSCs demonstrated the highest proliferation activity and MADSCs demonstrated the higher proliferation activity than MBMSCs (Figure 1C).

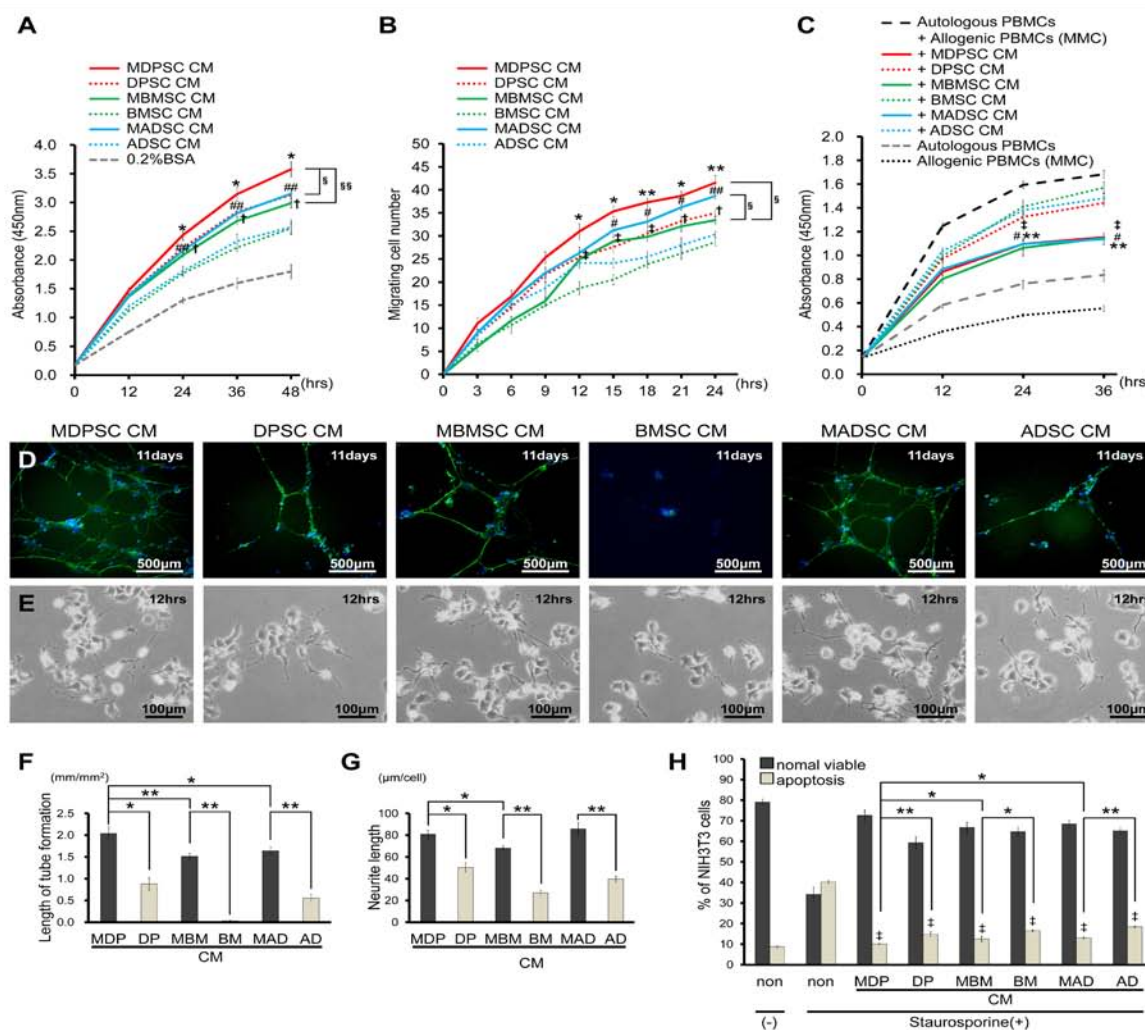
The differentiation potential of mobilized MSCs into endothelial cell lineage (Figure 1D) and neuronal cell lineage (Figure 1E and 1F) was compared with colony-derived MSCs, respectively. Total length of tube formation (Figure 1G) and the average diameter of neurospheres (Figure 1H) were significantly higher in mobilized MSCs compared to corresponding colony-derived MSCs. MDPSCs had the highest angiogenic and neurogenic potential among three mobilized MSCs. The mRNA expression of *neurofilament*, *neuromodulin* and *SCN1a* as neuronal markers demonstrated higher neurogenic potential of mobilized MSCs compared to colony-derived MSCs (Figure 1I).

These results demonstrated that not only DPSCs but also BMSCs and ADSCs contained subsets with high “stemness” can be isolated by G-CSF-induced mobilization.

### Effect of the conditioned media

Next, the ability of the conditioned media (CM) of mobilized MSCs to accelerate cell proliferation and migration and suppress immunoreaction and apoptosis was investigated. The CM of mobilized MSCs was significantly more effective on the proliferation (Figure 2A) and migration (Figure 2B) in NIH3T3 cells than the CM of corresponding colony-derived MSCs. The CM of MDPSCs was the most effective on proliferation among the CM of three mobilized MSCs. The migratory effect of the CM of MDPSCs and MADSCs was higher than that of MBMSCs. A significantly enhanced immunosuppression by the CM of mobilized MSCs was shown by MLR assay compared to the CM of colony-derived MSCs, respectively (Figure 2C).

In the presence of each CM for 11days, HUVECs also formed extensive networks of cords and tube-like structures, typically associated with endothelial cells (Figure 2D). The CM of mobilized MSCs induced more dense formation of tube-like structures than the CM of corresponding colony-derived MSCs (Figure 2F). The CM of



**Figure 2:** The effect of the conditioned media (CM) of each of MSCs *in vitro*. (A) Proliferation activity and (B) the migratory activity of NIH3T3 supplemented with the CM of MSCs (\**p* < 0.05, \*\**p* < 0.01, the CM of MDPSCs versus the CM of DPSCs; †*p* < 0.05, ‡*p* < 0.01, the CM of MBMSCs versus the CM of BMSCs; \**p* < 0.05, \*\**p* < 0.01, the CM of MADSCs CM versus the CM of ADSCs; §*p* < 0.05, §§*p* < 0.01). (C) The mixed lymphocyte reaction (MLR) assay (MMC, treated with Mitomycin C; \**p* < 0.05, \*\**p* < 0.01, the CM of MDPSCs versus the CM of DPSCs; †*p* < 0.05, ‡*p* < 0.01, the CM of MBMSCs versus the CM of BMSCs; §*p* < 0.05, §§*p* < 0.01, the CM of MADSCs CM versus the CM of ADSCs; §*p* < 0.05, §§*p* < 0.01). (D) The endothelial differentiation assay of HUVECs for 11 days on dish. Immunostaining with cadherin-5 (VE-cadherin) for vascular endothelial cells. (E) Neurite outgrowth in human neuroblastoma TGW cells enhanced by the CM of MSCs for 12 h. (F) Mean lengths of networks of cords and tube-like structures (\**p* < 0.05, \*\**p* < 0.01). (G) The mean length of neurite was compared (\**p* < 0.05, \*\**p* < 0.01). (H) The relative percentages of viable and apoptotic cells analyzed by flowcytometry (\**p* < 0.05, \*\**p* < 0.01; †*p* < 0.01, compared with staurosporine (+) and CM (-) apoptotic cells). The experiments were repeated three times (3 lots), and one representative experiment is presented. Data are expressed as the means ± SD of 3 determinations.

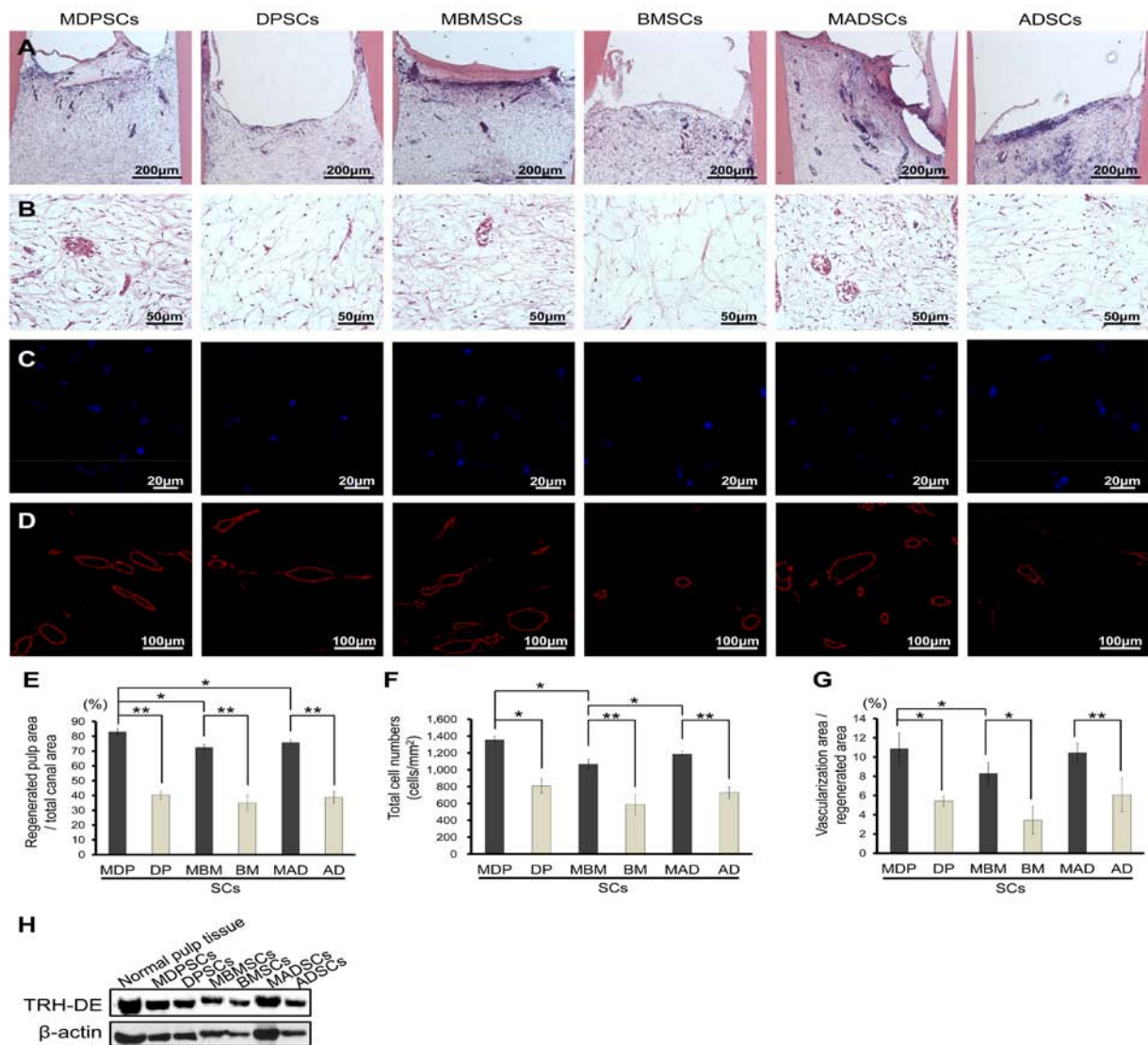
MDPSCs was most effective on endothelial differentiation among the CM of three mobilized MSCs. Neurite outgrowth in human neuroblastoma TGW cells was also enhanced by exposure to the CM of mobilized MSCs compared with the CM of corresponding colony-derived MSCs (Figure 2E and 2G). The CM of MDPSCs was significantly more effective on neurite outgrowth in TGW cells than the CM of MBMSCs. We also examined the anti-apoptotic effect of each CM. The survival rate of NIH3T3 cells was significantly enhanced by the CM of mobilized MSCs compared to the CM of corresponding colony-derived MSCs (Figure 2H). The CM of MDPSCs was the most effective on anti-apoptosis among the CM of three mobilized MSCs.

Thus, the CM of mobilized MSCs, especially the CM of MDPSCs, had superior trophic effects to the CM of corresponding colony-

derived MSCs. These results demonstrated that the mobilized MSCs were isolated from bone marrow and adipose tissue by the G-CSF-induced mobilization as those isolated from dental pulp.

### Pulp regenerative potential

To evaluate regenerative potential of mobilized MSCs, an ectopic tooth transplantation model was used. Pulp-like tissue with well-established vascularity was observed in all transplantations of mobilized MSCs on day 21 (Figures 3B, 3D, 3G). The total volume and the cell density of the regenerated tissue were much higher in the mobilized MSC transplantations compared to those in colony-derived MSC transplantations (Figures 3A, 3C, 3E, 3F), respectively. The MDPSC transplantation yielded the highest volume of regenerated tissue in all transplantations.



**Figure 3:** Regeneration of pulp tissue after ectopic tooth transplantation in severe combined immunodeficiency (SCID) mice subcutaneously. (A, B) Hematoxylin and Eosin. (C) Nuclear staining with Hoechst 33342. (D) Immunostaining with RECA1. (E) Ratio of regenerated area to root canal area ( $*p < 0.05$ ,  $**p < 0.01$ ). (F) The cell density in regenerated pulp tissues ( $*p < 0.05$ ,  $**p < 0.01$ ). (G) Ratio of neovascularization area to regenerated area ( $*p < 0.05$ ,  $**p < 0.01$ ). The experiments were repeated three times (3 lots), and one representative experiment is presented. Data are expressed as the means  $\pm$  SD of 3 determinations. (H) Western blot analysis of the expression of TRH-DE, a pulp tissue biomarker, in each regenerated tissue.

Immunostaining with RECA1 demonstrated that neovascularization in the regenerated pulp tissue after transplantation of mobilized MSCs was significantly higher compared to corresponding colony-derived MSCs. The MDPSC transplantation induced the higher vasculature than the MBMSC transplantation (Figure 3D, 3G).

The regenerated tissue was further examined by real-time RT-PCR analysis and western blot analysis. The mRNA expression of *TRH-DE* and *syndecan 3*, biomarkers of pulp tissue, was higher in the mobilized MSC transplantations compared to that in corresponding colony-derived MSC transplantations and was similar to that in normal mouse pulp tissue. The expression of *periostin* was lower in the mobilized MSC transplantations compared to that

in corresponding colony-derived MSC transplantations (Table 3). The protein expression of TRH-DE was almost in the same level in all transplantations (Figure 3H). These results demonstrated that pulp regenerative potential of the mobilized MSC transplantations was higher than that of corresponding colony-derived MSC transplantations.

## Discussion

The G-CSF-induced stem cell mobilization method has previously been developed as an efficacious and safety method to isolate MSC subsets from dental pulp (MDPSCs) in canine and human [16,17]. MDPSCs represent following stem cell properties: higher ratio of CXCR4 and G-CSFR positive cells, higher proliferative and migratory activities, and higher trophic effects, including anti-

**Table 3:** Relative mRNA expression of tissue markers of pulp and periodontal ligament in regenerated tissue after stem cell transplantations. The experiments were repeated three times (3 lots). Data are expressed as the means  $\pm$  SD of 3 determinations.

	MDPSCs	DPSCs	MBMSCs	BMSCs	MADSCs	ADSCs
<i>TRH-DE</i>	**1.3 $\pm$ 0.3	0.6 $\pm$ 0.1	*1.2 $\pm$ 0.2	0.4 $\pm$ 0.1	*1.2 $\pm$ 0.2	0.5 $\pm$ 0.2
<i>Syndecan3</i>	*0.9 $\pm$ 0.2	0.4 $\pm$ 0.1	*0.8 $\pm$ 0.2	0.2 $\pm$ 0.0	*0.9 $\pm$ 0.2	0.3 $\pm$ 0.1
<i>Periostin</i>	*0.1 $\pm$ 0.0	0.3 $\pm$ 0.1	**0.1 $\pm$ 0.0	0.4 $\pm$ 0.1	*0.1 $\pm$ 0.0	0.3 $\pm$ 0.1
<i>PLAP</i>	0.0 $\pm$ 0.0	0.0 $\pm$ 0.0	0.0 $\pm$ 0.0	0.0 $\pm$ 0.0	0.0 $\pm$ 0.0	0.1 $\pm$ 0.0

*TRH-DE*, *Syndecan3*: relative to mouse normal pulp tissue, *Periostin*, *PLAP*: relative to mouse normal periodontal ligament. (\* $p < 0.05$ , \*\* $p < 0.01$ , versus each colony-derived MSC transplantation)

apoptosis, accelerating proliferation, migration, immunomodulation, angiogenesis and neuronal extension compared with colony-derived DPSCs. The present study has further demonstrated isolation of MSC subsets from bone marrow and adipose tissue of porcine mandible in the same individuals by the same method of G-CSF-induced mobilization of stem cells as MDPSCs. The flow cytometric analysis revealed the higher rate of CXCR4 and G-CSFR positive cells in MBMSCs and MADSCs as similarly demonstrated in MDPSCs compared with colony-derived MSCs, respectively. Each of mobilized MSCs of bone marrow and adipose tissue also indicated the higher migratory and proliferation abilities than corresponding colony-derived MSCs, which was similar to MDPSCs compared with DPSCs. These results suggested the utility of G-CSF-induced stem cell mobilization to isolate MSC subsets from other tissues including bone marrow and adipose tissue.

The present investigation has demonstrated that the regenerative potential of each of mobilized MSCs was higher than that of corresponding colony-derived MSCs in an experimental model of ectopic tooth transplantation in SCID mice. Growing evidence revealed that the beneficial effects of MSCs are predominantly caused by the multitude of bioactive molecules secreted by MSCs, the trophic factors [2]. Our previous studies have demonstrated that the endogenous cells from the surrounding tissue migrate and proliferate in the tooth root canal by trophic factors released from the transplanted pulp MSCs. These trophic factors also induce angiogenesis/neurogenesis and re-innervation *in vivo* [14,16,17]. Thus, the biological properties of the CM of mobilized MSCs were compared with the CM of corresponding colony-derived MSCs *in vitro*. The CM of mobilized MSCs enhanced proliferation and migratory activity, immunosuppression, angiogenic potential, neurite extension and anti-apoptosis compared to the CM of corresponding colony-derived MSCs. In addition, trophic factors including *MMP3*, *VEGF*, *GDNF* and *BDNF* mRNA were expressed higher in each of mobilized MSCs compared with those in colony-derived MSCs, respectively. VEGF is a major regulator of blood vessel formation and function [26], due to induction of endothelial cell proliferation, enhanced cell migration and anti-apoptosis [27]. MMP3 is known as an enhancer for proliferation, migration, and survival of HUVECs [28]. The activation of MMP3 expression can degrade CTGF in the VEGF-CTGF complex and release the angiogenic activity of VEGF [29]. Neurotrophic factors, such as BDNF or GDNF, encourage repair and, potentially, new growth of neurons [30]. In particular, neurite extension is mediated via GDNF and its receptor RET in TGW cells [31]. Thus, these results indicated the mechanism of high regenerative potential of mobilized MSCs compared to corresponding colony-derived MSCs.

In this study, the stem cell properties were further compared among three mobilized MSCs isolated by the same isolation and expansion method from the same individuals. In three mobilized MSCs, MDPSCs showed the highest proliferation activity, and the highest differentiation abilities into endothelial cells and neuronal cells. The trophic effect of CM on proliferation, angiogenesis and anti-apoptosis, and pulp regeneration ability *in vivo* were also the highest in MDPSCs. Furthermore, the higher expression ratio of G-CSFR, higher migratory ability, higher trophic effect of CM on migration and neurite extension, and the higher cell density and vasculature in regenerated pulp tissue were demonstrated in MDPSCs compared with MBMSCs. In comparison with MBMSCs, MADSCs indicated the higher expression ratio of G-CSFR, higher migratory and proliferation abilities and higher trophic effect of CM on migration, and the higher cell density in regenerated pulp tissue. The present results demonstrate that stemness and regenerative potential of mobilized MSCs are dependent on tissue origin [32], although G-CSF-induced stem cell mobilization is useful for many tissues to isolate MSC subsets.

We had previously isolated mobilized DPSCs in canine [16] and human [17]. In this study, stem cell properties were further examined in porcine by using the same isolation method as previously demonstrated. Since the cell size was larger in porcine compared with that in canine and human, cell number applied to the upper chambers was reduced to  $1.5 \times 10^4$  cells/100  $\mu$ l from  $2.0 \times 10^4$  cells/100  $\mu$ l. As the result, the mobilized porcine DPSCs indicated the similar cell properties to the others, suggesting that G-CSF-induced stem cell mobilization might apply to any type of cells across animal species by the same method.

Generally, a billion MSCs are needed to be administered for therapeutic efficacy, since only ~1% of the cells reach the ischemic myocardium after systemic infusion. The high migratory ability of mobilized MSCs due to high content of CXCR4 positive and G-CSFR positive cells may provide a clinically useful methods to improve the homing of MSCs to the ischemic regions such as myocardium and brain by the CXCR4/SDF-1 axis [33,34] and G-CSFR/GCSF system [35].

The high paracrine effects of mobilized MSCs can modulate the microenvironment of the diseased tissues so as to protect the injured cells, promote survival and activate any available endogenous repair mechanisms with high angiogenic/vasculogenic, neurogenic and regenerative potential. The extraordinary immunomodulatory properties of mobilized MSCs enable autologous and heterologous transplantation. Mobilized MSCs can be transplanted directly without genetic modification or pre-treatment, and are able to migrate to the tissue injury sites. There is no teratoma formation concern after



transplantation [16], and no moral objection or ethical controversies involved in their attainment. These advantageous properties heighten the clinical applicability of mobilized MSCs in a wide range of diseases.

## Conclusions

Our data has demonstrated the utility of G-CSF-induced stem cell mobilization for isolation of BMSC and ADSC subsets as DPSC subsets. The advantage of the mobilized MSCs with enhanced stemness, trophic effects and regenerative potential may provide considerable promise in clinical cell therapy.

## Competing Interests

The authors have declared that no competing interests exist.

## Acknowledgements

We thank Mr. Masaaki Shimagaki from Toray Industry Inc. for supplying the chemically treated transmembrane. This work was supported by the Budget for promoting science and technology in Japan, which directly follows the policy of the Council for Science and Technology Policy (CSTP), chaired by the Prime Minister (M.N.), and the Research Grant for Longevity Sciences (23-10) from the Ministry of Health, Labour and Welfare (M.N.). The authors deny any conflicts of interest related to this study.

## References

- Satija NK, Singh VK, Verma YK, Gupta P, Sharma S, Afrin F, et al. Mesenchymal stem cell-based therapy: a new paradigm in regenerative medicine. *J Cell Mol Med.* 2009; 13: 4385-4402.
- Bronckaers A, Hilkens P, Martens W, Gervois P, Ratajczak J, Struys T, et al. Mesenchymal stem/stromal cells as a pharmacological and therapeutic approach to accelerate angiogenesis. *Pharmacol Ther.* 2014; 143: 181-196.
- Gimble JM, Katz AJ, Bunnell BA. Adipose-derived stem cells for regenerative medicine. *Circ Res.* 2007; 100: 1249-1260.
- Ito K, Aoyama T, Fukiage K, Otsuka S, Furu M, Jin Y, et al. A novel method to isolate mesenchymal stem cells from bone marrow in a closed system using a device made by nonwoven fabric. *Tissue Eng Part C Methods.* 2009; 16: 81-91.
- Lin K, Matsubara Y, Masuda Y, Togashi K, Ohno T, Tamura T, et al. Characterization of adipose tissue-derived cells isolated with the Celution™ system. *Cytotherapy.* 2008; 10: 417-426.
- Semon JA, Maness C, Zhang X, Sharkey SA, Beuttler MM, Pandey AC, et al. Comparison of human adult stem cells from adipose tissue and bone marrow in the treatment of experimental autoimmune encephalomyelitis. *Stem Cell Res Ther.* 2014; 5: 2.
- Stenderup K, Justesen J, Clausen C, Kassem M. Aging is associated with decreased maximal life span and accelerated senescence of bone marrow stromal cells. *Bone.* 2003; 33: 919-926.
- Oñate B, Vilahur G, Ferrer-Lorente R, Ybarra J, Díez-Caballero A, Ballesta-López C, et al. The subcutaneous adipose tissue reservoir of functionally active stem cells is reduced in obese patients. *FASEB J.* 2012; 26: 4327-4336.
- Madonna R, Renna FV, Cellini C, Cotellese R, Picardi N, Francomano F, et al. Age-dependent impairment of number and angiogenic potential of adipose tissue-derived progenitor cells. *Eur J Clin Invest.* 2011; 41: 126-133.
- Corselli M, Crisan M, Murray IR, West CC, Scholes J, Codrea F, et al. Identification of perivascular mesenchymal stromal/stem cells by flow cytometry. *Cytometry A.* 2013; 83: 714-720.
- Orlic D, Kajstura J, Chimenti S, Jakoniuk I, Anderson SM, Li B, et al. Bone marrow cells regenerate infarcted myocardium. *Nature.* 2001; 410: 701-705.
- Gronthos S, Zannettino AC, Hay SJ, Shi S, Graves SE, Kortessidis A, et al. Molecular and cellular characterisation of highly purified stromal stem cells derived from human bone marrow. *J Cell Sci.* 2003; 116: 1827-1835.
- Ishizaka R, Hayashi Y, Iohara K, Sugiyama M, Murakami M, Yamamoto T, et al. Stimulation of angiogenesis, neurogenesis and regeneration by side population cells from dental pulp. *Biomaterials.* 2013; 34: 1888-1897.
- Iohara K, Imabayashi K, Ishizaka R, Watanabe A, Nabekura J, Ito M, et al. Complete pulp regeneration after pulpectomy by transplantation of CD105<sup>+</sup> stem cells with stromal cell-derived factor-1. *Tissue Eng Part A.* 2011; 17: 1911-1920.
- Braakman E, Schuurhuis G, Preijers F, Voermans C, Theunissen K, Van Riet I, et al. Evaluation of 'out-of-specification' CliniMACS CD34-selection procedures of hematopoietic progenitor cell-apheresis products. *Cytotherapy.* 2008; 10: 83-89.
- Iohara K, Murakami M, Takeuchi N, Osako Y, Ito M, Ishizaka R, et al. A novel combinatorial therapy with pulp stem cells and granulocyte colony-stimulating factor for total pulp regeneration. *Stem Cells Transl Med.* 2013; 2: 521-533.
- Murakami M, Horibe H, Iohara K, Hayashi Y, Osako Y, Takei Y, et al. The use of granulocyte-colony stimulating factor induced mobilization for isolation of dental pulp stem cells with high regenerative potential. *Biomaterials.* 2013; 34: 9036-9047.
- Ponte AL, Ribeiro-Fleury T, Chabot V, Gouilleux F, Langonné A, Héroult O, et al. Granulocyte-colony-stimulating factor stimulation of bone marrow mesenchymal stromal cells promotes CD34<sup>+</sup> cell migration via a matrix metalloproteinase-2-dependent mechanism. *Stem Cells Dev.* 2012; 21: 3162-3172.
- Cheng Z, Liu X, Ou L, Zhou X, Liu Y, Jia X, et al. Mobilization of mesenchymal stem cells by granulocyte colony-stimulating factor in rats with acute myocardial infarction. *Cardiovasc Drugs Ther.* 2008; 22: 363-371.
- Khan M, Manzoor S, Mohsin S, Khan SN, Ahmad FJ. IGF-1 and G-CSF complement each other in BMSC migration towards infarcted myocardium in a novel *in vitro* model. *Cell Biol Int.* 2009; 33: 650-657.
- Nakashima M. Establishment of primary cultures of pulp cells from bovine permanent incisors. *Arch Oral Biol.* 1991; 36: 655-663.
- Iohara K, Zheng L, Ito M, Tomokiyo A, Matsushita K, Nakashima M. Side population cells isolated from porcine dental pulp tissue with self-renewal and multipotency for dentinogenesis, chondrogenesis, adipogenesis, and neurogenesis. *Stem Cells.* 2006; 24: 2493-2503.
- Iohara K, Zheng L, Wake H, Ito M, Nabekura J, Wakita H, et al. A novel stem cell source for vasculogenesis in ischemia: subfraction of side population cells from dental pulp. *Stem Cells.* 2008; 26: 2408-2418.
- Yamamoto T, Murakami M, Ishizaka R, Iohara K, Kurita K, Nakashima M. Identification of thyrotropin-releasing hormone (TRH)-degrading enzyme as a biomarker for dental pulp tissue. *Dentistry.* 2012; 2: 1000114.
- Ishizaka R, Iohara K, Murakami M, Fukuta O, Nakashima M. Regeneration of dental pulp following pulpectomy by fractionated stem/progenitor cells from bone marrow and adipose tissue. *Biomaterials.* 2012; 33: 2109-2118.
- Gerhardt H, Golding M, Fruttiger M, Ruhrberg C, Lundkvist A, Abramsson A, et al. VEGF guides angiogenic sprouting utilizing endothelial tip cell filopodia. *J Cell Biol.* 2003; 161: 1163-1177.
- Chavakis E, Dimmeler S. Regulation of endothelial cell survival and apoptosis during angiogenesis. *Arterioscler Thromb Vasc Biol.* 2002; 22: 887-893.
- Zheng L, Amano K, Iohara K, Ito M, Imabayashi K, Ito T, et al. Matrix metalloproteinase-3 accelerates wound healing following dental pulp injury. *Am J Pathol.* 2009; 175: 1905-1914.
- Laurent M, Martinier C, Thibout H, Hoffman M, Verrecchia F, Le Bouc Y, et al. NOHV increases MMP3 expression and cell migration in glioblastoma cells via a PDGFR- $\alpha$ -dependent mechanism. *FASEB J.* 2003; 17: 1919-1921.
- Joyce N, Annett G, Wirthlin L, Olson S, Bauer G, Nolte JA. Mesenchymal stem cells for the treatment of neurodegenerative disease. *Regen Med.* 2010; 5: 933-946.

31. Uchida M, Enomoto A, Fukuda T, Kurokawa K, Maeda K, Kodama Y, et al. Dok-4 regulates GDNF-dependent neurite outgrowth through downstream activation of Rap1 and mitogen-activated protein kinase. *J Cell Sci.* 2006; 119: 3067-3077.
32. Yamada Y, Fujimoto A, Ito A, Yoshimi R, Ueda M. Cluster analysis and gene expression profiles: a cDNA microarray system-based comparison between human dental pulp stem cells (hDPSCs) and human mesenchymal stem cells (hMSCs) for tissue engineering cell therapy. *Biomaterials.* 2006; 27: 3766-3781.
33. Ghadge SK, Mühlstedt S, Özcelik C, Bader M. SDF-1 $\alpha$  as a therapeutic stem cell homing factor in myocardial infarction. *Pharmacol Ther.* 2011; 129: 97-108.
34. Robin AM, Zhang ZG, Wang L, Zhang RL, Katakowski M, Zhang L, et al. Stromal cell-derived factor 1 $\alpha$  mediates neural progenitor cell motility after focal cerebral ischemia. *J Cereb Blood Flow Metab.* 2005; 26: 125-134.
35. Solaroglu I, Jadhav V, Zhang JH. Neuroprotective effect of granulocyte-colony stimulating factor. *Front Biosci.* 2007; 12: 712-724.